



Orion

LU/LA Commercial Elevator



OWNER'S MANUAL

(To Be Retained by Owner After Installation
by Authorized Savaria Dealer)

Part No. 000586
26-m08-2020

IMPORTANT

Ensure that only an authorized Savaria Dealer installs and services the Orion LU/LA Commercial Elevator. Under no circumstances is anyone other than a dealer with Savaria training and authorization to install, adjust, service or modify any mechanical or electrical device on this equipment. Failure to follow this warning can result in safety system compromises or defeat; this can result in serious injury or death. Savaria accepts no liability for property damage, warranty claims or personal injury, including death, in this circumstance.

Passenger safety is the result of countless details in the equipment’s design, manufacture, and installation. After installation, reliable operation and continual safe operation requires regular service and inspection at least twice per year, or more frequently where usage, environment, or local jurisdiction requires. As the Owner, you are responsible for ensuring that regular service and inspections occur in a timely manner.

Refer to this manual for specifications, operating instructions and maintenance of the Orion LU/LA Commercial Elevator.

Upon completion of installation, the dealer must provide you with the following information and ensure it is recorded in this manual. In addition, either the dealer or you must keep any service and/or maintenance records in the Maintenance Record section of this manual.

WARRANTY

Ensure your Savaria Dealer provides you with a copy of the manufacturer’s limited parts warranty and documentation relating to any Dealer labour warranty.

<p style="text-align: center;">FOR OWNER’S RECORDS</p> <p>Customer Name: _____</p> <p>Installing Dealer: _____</p> <p>Dealer’s Telephone Number: _____</p> <p>Date Installed: _____</p> <p>Serial/Job Number: _____</p>
--

Table of Contents

TO ENSURE SAFE OPERATION 4

1. GENERAL SPECIFICATIONS 5

2. DESCRIPTION 6

3. OPERATING FROM THE LANDING CONTROLS 8

4. OPERATING FROM THE COP CONTROLS 8

5. DOOR OPEN BUTTON 9

6. PHONE MONITORING (IF APPLICABLE) 10

7. EMERGENCY BATTERY LOWERING 11

8. EMERGENCY LIGHT 11

9. EMERGENCY HANDS-FREE TELEPHONE (OPTIONAL) 11

10. MANUAL LOWERING DEVICE (MACHINE ROOM) 11

11. MAINTENANCE 13

12. MAINTENANCE RECORD 15



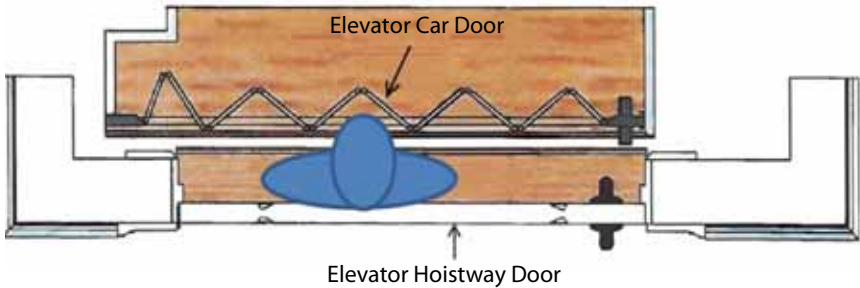
DANGER

This product is designed and manufactured to exact specifications. Modifications to this product in any way can be dangerous and will void the warranty.

TO ENSURE SAFE OPERATION

To ensure safe operation of this equipment, pay careful attention to the important notes below.

- Read this manual carefully before using the equipment.
- To prevent accidents, adhere strictly to the instructions and keep clear of moving parts at all times.
- Be aware of hazardous space between the hall door and car, especially for small children.



- Follow instructions on all equipment labels at all times. Replace any damaged labels immediately.
- Ensure that only qualified personnel perform maintenance and service on the unit.
- When replacing parts, be sure that only genuine Savaria parts are used.
- This unit is intended for use by a mature person who understands its proper operation as set out in this manual.



WARNING

At no time should children under the age of 16 use the elevator/lift while unsupervised.

- Prior to operation, make sure that:
 - All doors and gates are locked and secure.
 - All areas in and around the lift are clear of any obstructions.
 - All lights are functioning properly.
- Test your keys and emergency stop button every month.

1. GENERAL SPECIFICATIONS

Load capacity	1400 lb (635 kg)
Rated speed	30 feet per minute (0.15 m/s) nominal
Maximum travel	25 feet (7.6 m)
Maximum # of stops	6 stops
Daily cycle	Normal: 30 Heavy: 75 Excessive: 100 Maximum starts in 1 hour on standard installation: 15
Machine room operating temperature	50 to 80 degrees F (10 to 27 degrees C)
Cab sizes	48" wide x 54" deep (1220 mm x 1372 mm) 42" wide x 60" deep (1067 mm x 1524 mm) 51" wide x 51" deep (1295 mm x 1295 mm) 54" wide x 54" deep (1372 mm x 1372 mm)
Door opening	36" x 80" (890 mm x 2030 mm) nominal
Pit depth required	14" (356 mm) minimum, 96" (2438 mm) maximum
Overhead clearance (minimum)	108" (2743 mm) – existing building 134" (3404 mm) – new building
Control system	Single automatic push button
Floor selection	Magnetic selector
Sub-floor material	Masonite over plywood sub-floor
Cab finish	Fire-rated steel panel cab interior in choice of white or black; optional laminate panel overlays available
Standard finishes	Standard architectural white or black steel Stainless steel Car Operating Panel (COP) Handrail and stainless colour trimmed light fixtures Optional stainless steel finish in the cab
Power supply	208 volt, three phase, 30 amps, 60 Hz or 240 volt, single phase, 40 amps, 60 Hz
Drive system	1:2 cable hydraulic
Motor	5 hp (3.73 kW) submersed
Lighting supply	110 volts, 60 cycle, 15 amps
Standard features	Fully automatic operation Modular rail construction for easy installation Automatic cab on/off interior lighting Digital display on Car Operating Panel (COP)
Safety features	Emergency battery back-up for lowering and interior lighting Emergency stop and alarm buttons Emergency manual lowering Safety brakes Standard phone in cabinet; optional hands-free phone available Optional hoistway access
Options	Savaria Link remote monitoring

2. DESCRIPTION

Cab Operating Panel (COP) Buttons (Figure 1-A)

The Cab Operating Panel (COP) buttons facilitate the UP/DOWN movement of the cab between landings. Once the selected landing button is pressed, the cab will automatically move to the landing. The cab will stop when the selected landing is reached.

Door Open/Close Buttons (Figure 1-B)

The elevator door will close automatically after a preset adjustable time in seconds. These buttons can be pressed to open/close the door when the cab is at a landing.

Alarm Button (Figure 1-C)

This button can be pressed at any time to sound the alarm in case of an emergency.

Run/Stop Keyswitch (Figure 1-D)

In the **STOP** position, the cab stops and the alarm buzzer is activated. This key switch must be in the **RUN** position for normal operation.

Phase 2 Fire Service Keyswitch - Optional (Figure 1-E)

The keyswitch in the **ON** position enables cab controls as per Code B44 2.27. The keyswitch in the **OFF** position allows for normal lift operation. The keyswitch in the **HOLD** position holds the doors open when the cab is at a landing.

Call Cancel Button (Optional)

Used with Fire Service 2; when pressed, this button cancels all registered calls. The cab will stop at the next landing.

Help (Phone) Button - Optional (Figure 1-F)

This button can be pressed at any time to activate the optional hands-free phone in case of an emergency. The red light above the speaker will come on when two-way communication has been established. For units that have a standard hand-held phone, it is located in a separate phone cabinet in the cab.



Figure 1
Keyped COP

Emergency Light (Figure 1-G)

The COP emergency light remains **ON** in the event of a main power failure. The emergency light uses a Battery Back-Up system with an automatic recharger.

Handrail

A single handrail is mounted below the COP.

Landing Hall Call Station Controls (Figure 2)

Hall Call Stations are installed at all landings to move the cab to the landing from which you are calling. Press the **CALL** button to call the cab to your landing. The position indicator displays the landing the cab is at. An optional keyswitch limits the elevator's use to authorized persons only.

Landing Door Lock

The Landing Door lock prevents movement of the cab unless the door is in the closed and locked position. If the door is not completely closed, the cab will not move.

Emergency Battery Operation

In the event of a building power failure, the door system is provided with a temporary power back-up system to continue the opening operation for a number of times. On resuming normal building power, the back-up system will turn **OFF** and begin automatically recharging.



Figure 2
Hall Call Station

3. OPERATING FROM THE LANDING CONTROLS

NOTE

When using the landing controls, the cab can only be moved (called) to the level from which you are calling. When using the COP buttons in the cab, the cab can be moved to any level.

- 1 To call the elevator to your landing, press the **CALL** button. The cab will automatically stop at your landing.
- 2 When the cab reaches the landing, the door lock on the landing door will automatically release and the sliding doors will open.
- 3 Enter the cab. The doors will close behind you after a few seconds.
- 4 Once inside the cab, lock the wheelchair wheels.



WARNING

Wheelchair wheels must be locked at all times when the elevator is moving.

4. OPERATING FROM THE COP CONTROLS

- 1 If sitting in the cab in a wheelchair, lock the wheelchair wheels. If standing in the cab, hold on to the handrail.
- 2 Press the appropriate landing button to “send” the cab to the desired landing.
- 3 When the cab reaches the landing, the door lock on the landing door will automatically release. The door will “chime” and the sliding doors will open.
- 4 Exit the cab. The doors will close behind you after a few seconds.



WARNING

Wheelchair wheels must be locked at all times when the elevator is moving.

5. DOOR OPEN BUTTON

The Door Open button is located on the Car Operating Panel (COP) inside the elevator.

When the elevator is at a landing level, the doors can be opened by pressing the Door Open button. Normally the doors will have opened and already closed automatically. The Door Open button allows the door to be reopened.



Figure 3
Door Open Button

6. PHONE MONITORING (IF APPLICABLE)

Depending on what code your elevator was ordered and inspected under, there may be a phone monitor.

If provided, the phone monitor will be located at the main landing. There is a small red Elevator Communications Failure light and a beeper as shown below.

If the phone line is not functioning, the small red light will flash and the beeper will sound to warn users that the emergency phone in the car is not functioning.

Contact your Authorized Dealer as soon as possible.

NOTE: There is an alarm silence key provided to turn off the beeper.



Figure 3
Phone Monitor

7. EMERGENCY BATTERY LOWERING

This feature allows the lowering of the cab from inside the cab itself, without having to get someone to manually lower it from inside the machine room. This device operates on batteries and is only activated in the event of a main building power failure. The operation is as follows:

- 1 Press any button below the floor where the elevator is located. The elevator will descend and stop at the landing.
- 2 Upon arrival at the desired floor, the automatic doors will open. Exit the cab.

8. EMERGENCY LIGHT

In the event of a main power failure, the emergency cab light will light automatically.

9. EMERGENCY HANDS-FREE TELEPHONE (OPTIONAL)

- 1 The lift comes with a standard hand-held phone located in a cabinet in the cab. If your lift is equipped with an Emergency Hands-Free Telephone, press and hold down the phone button to activate the phone line. A short time delay (adjustable by the installing technician) will occur.
- 2 Release the button once the call is picked up by the telephone line.

The system will automatically dial out to a preprogrammed telephone number as set up by the installing technician.

10. MANUAL LOWERING DEVICE (MACHINE ROOM)

In the event of power failure, the cab can be moved to a lower level manually by using the following procedures:

NOTE

After use of any emergency function (access key or manual lowering device), ensure that all doors are secure and locked. While the emergency function is in use, DO NOT leave the area unattended.

- 1 Obtain the key to unlock the door to the machine room where the elevator pump unit is located.
- 2 Instruct the person(s) in the elevator to remain calm and stay well back from the door of the elevator. Ease their concern by telling them your intentions.

- 3 Switch the main disconnect switch to the "OFF" position for the main power supply to the elevator pump unit.
- 4 Unlock the controller tank and open the lid to locate the red **Manual Lowering Knob** on the pump unit. Pull the Manual Lowering Knob to lower the cab. See Figure 4 at the right. Maintain constant pressure on the knob until the elevator reaches the lowest landing and stops automatically. (Although you may not be able to see the elevator, this is readily detected since there will be no further noise as the oil flows to the reservoir.)

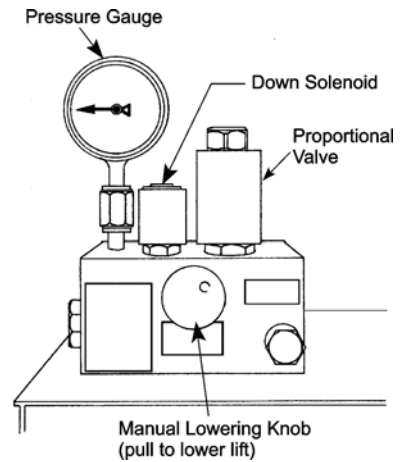


Figure 4
EPV Valve

- 5 Obtain the special door release key and open the lower landing door. Assist the passenger(s) from the cab.
- 6 After the passenger(s) have exited the cab, make sure the hoistway door is closed, reconnect the disconnect switch inside the machine room, and lock the door behind you.
- 7 Return the machine room key and the special door release key to their original storage areas.



WARNING

Under no circumstances should the pump controls or valve settings be adjusted except by an authorized Savaria dealer.

11. MAINTENANCE

Regular maintenance will keep your Orion in proper operating condition. As the owner of this elevator, you are responsible for making sure that maintenance and upkeep are done on a regularly scheduled basis.

NOTE

Elevator maintenance is recommended to be performed by an authorized Savaria dealer every 3 months and must be performed every 6 months. Units installed in adverse environments will require additional maintenance on a monthly basis.

IMPORTANT: Please test the phone in your elevator during every maintenance. If the phone is inactive, please shut down the elevator until the phone line is active. This applies to all lifts in a hoistway or enclosure models

To ensure proper operating condition of your unit, the items listed below are recommended to be performed every 3 months and must be performed every 6 months by an **Authorized Savaria Dealer**. Additional inspections may be required depending on usage.

- 1 Tighten all rail and cab fastening bolts.
- 2 Lubricate the door hinges and adjust the door closure if required.
- 3 Lubricate the rails with a light grease, such as white lithium.
- 4 Inspect the traveling cable for wear. Replace if any cuts or damage to the jacket is evident.
- 5 Inspect the elevator cables for wear or damage and replace if necessary. Always replace the safety washers at the swaged end of the cable when replacing cables. The washers are provided with replacement cables.
- 6 Inspect the safety washers at the swaged end of the elevator cables. Put the elevator on slack rope high enough so you can safely get under the elevator. Pull the manual lowering device so there is enough slack in the rope to pull the rope with the swag fitting down to view the washer. Replace the washer if there is any visible damage.
- 7 Check for any hose/pipe leaks. Replace and/or tighten the fittings to correct any hydraulic leaks found.
- 8 Check the fluid level of the pump reservoir (with the elevator at its lowest landing), and fill as required. (Use Grade 32 Hydraulic Oil). There must be at least 1" (25 mm) of oil on the dipstick.
- 9 Tighten any hose connections or bleeder valves found loose. Check the hydraulic cylinder (jack) for any leaks. If necessary, the packing seals may have to be replaced.

- 10** Replace the batteries in the control panel as indicated on the battery label.
- 11** Activate and test the safety mechanism.
- 12** Check that the phone is functioning properly.

Authorized Savaria Dealer

Orion LU/LA Commercial Elevator OWNER'S MANUAL

Part No. 000586
Copyright © 2020

Savaria Concord Lifts, Inc.
2 Walker Drive
Brampton, Ontario, L6T 5E1, Canada
www.savaria.com

For service or questions about this product, please contact your installing dealer.

DEALER NAME: _____

DEALER PHONE: _____

